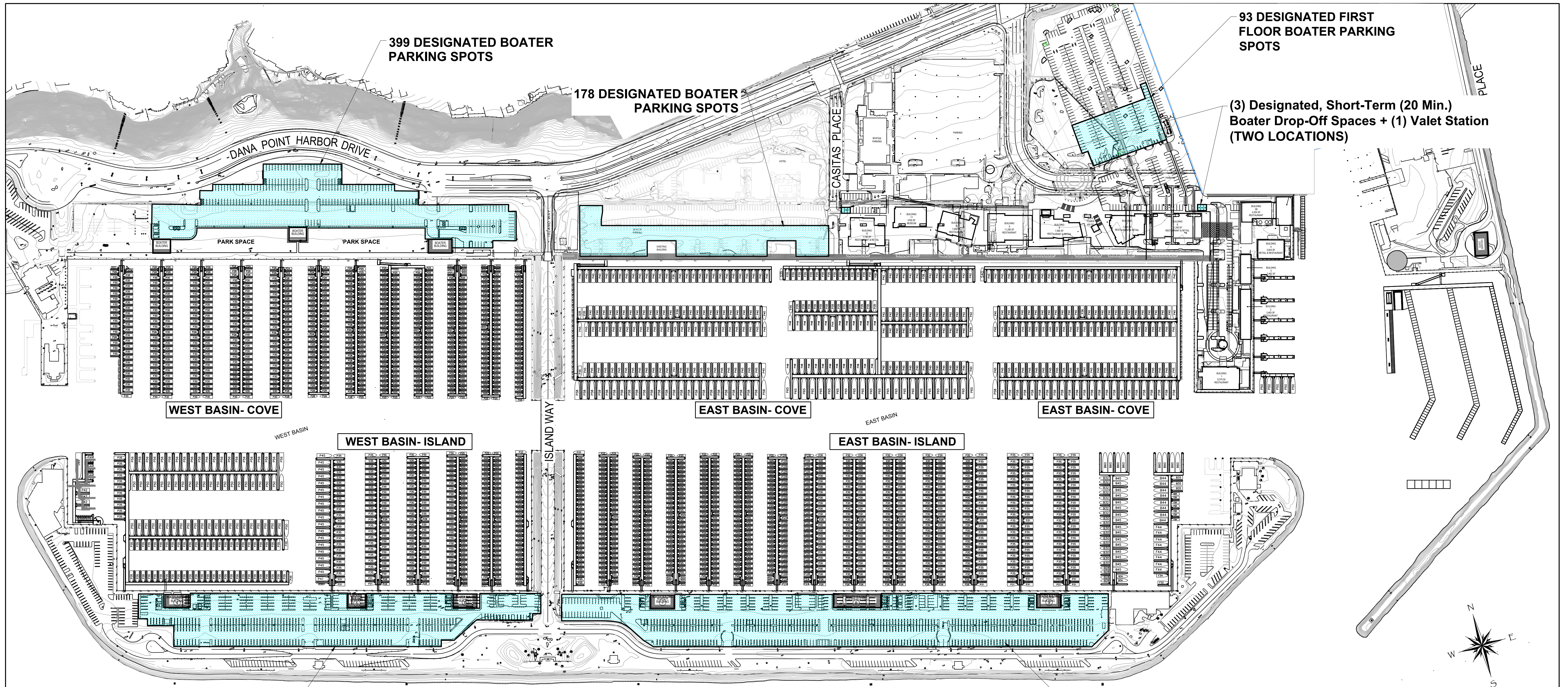


PRELIMINARY - NOT FOR CONSTRUCTION

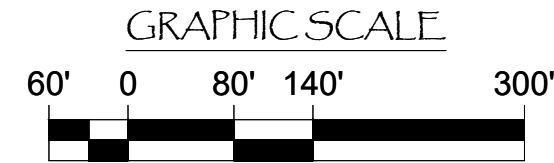


283 DESIGNATED BOATER PARKING SPOTS

550 DESIGNATED BOATER PARKING SPOTS

	East Basin - Cove	West Basin- Cove	West Basin- Island	East Basin- Island
Existing Parking	613	385	364	559
Required Parking *	271	399	283	550
Minimum Proposed Parking	271	399	283	550

* Based on LCP Requirements of .6 Dedicated Boater Parking Spaces per Slip, 2 Dedicated Parking Spaces per Commercial Fishing Slip, and 1 Parking Space per 250 square feet of Building Space



NO.	DATE	DESCRIPTION	BY
REVISIONS			

Bellingham MARINE
THE WORLD'S MOST COMPREHENSIVE MARINA BUILDER

SOUTHWEST DIVISION
CA LICENSE #442499
8810 SPARLING LANE
DIXON, CA 95620
TEL: (707) 678-2385
FAX: (707) 678-1760

THIS DRAWING CONTAINS PROPRIETARY INFORMATION WHICH IS THE PROPERTY OF BELLINGHAM MARINE INDUSTRIES, INC. AND SHALL NOT BE COPIED, REPRODUCED OR MADE AVAILABLE TO THIRD PARTIES WITHOUT PRIOR WRITTEN PERMISSION FROM BELLINGHAM MARINE INDUSTRIES, INC. UNIFLOAT® UNIDECK® AND © BELLINGHAM MARINE INDUSTRIES, INC.

PROJECT NUMBER:
7109
ENGINEER / DESIGNER:
PROJECT MANAGER:
CHECKED BY:

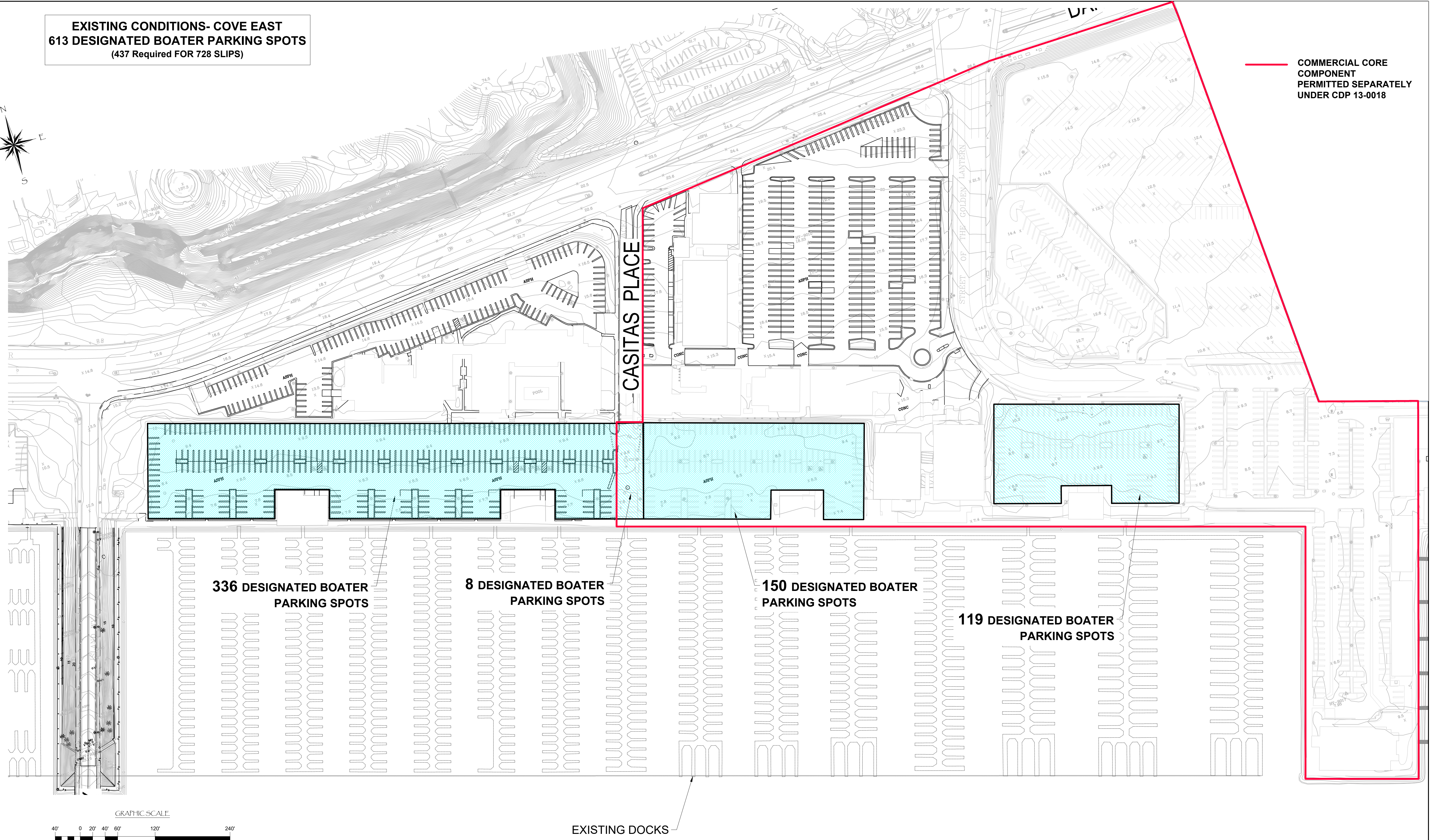
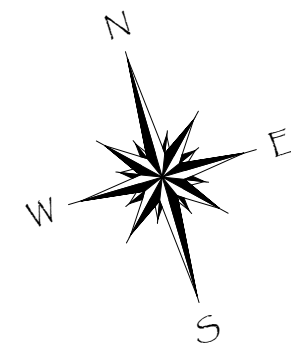
DANA POINT HARBOR REVITALIZATION
ALL MARINA AREAS (EAST, WEST, OUTER BASINS)
Dana Point, CA
BOATER PARKING PLAN

SCALE: 1" = 140'
(Sheet Size 24" x 36")
DRAWN BY: DD
DATE: 8-5-19
DRAWING: BPP1
SHEET NO.: **BPP1**

PRELIMINARY - NOT FOR CONSTRUCTION

EXISTING CONDITIONS- COVE EAST
613 DESIGNATED BOATER PARKING SPOTS
 (437 Required FOR 728 SLIPS)

COMMERCIAL CORE
 COMPONENT
 PERMITTED SEPARATELY
 UNDER CDP 13-0018



**336 DESIGNATED BOATER
 PARKING SPOTS**

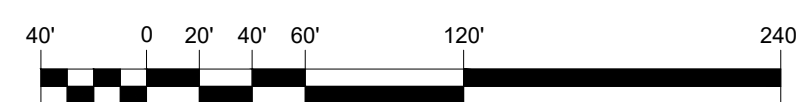
**8 DESIGNATED BOATER
 PARKING SPOTS**

**150 DESIGNATED BOATER
 PARKING SPOTS**

**119 DESIGNATED BOATER
 PARKING SPOTS**

EXISTING DOCKS

GRAPHIC SCALE



NO.	DATE	DESCRIPTION	BY



THE WORLD'S MOST
 COMPREHENSIVE
 MARINA BUILDER

SOUTHWEST DIVISION
 CA LICENSE #442499
 8810 SPARLING LANE
 DIXON, CA 95620
 TEL: (707) 678-2385
 FAX: (707) 678-1760

THIS DRAWING CONTAINS
 PROPRIETARY INFORMATION
 WHICH IS THE PROPERTY OF
 BELLINGHAM MARINE
 INDUSTRIES, INC. AND SHALL
 NOT BE COPIED, REPRODUCED
 OR MADE AVAILABLE TO THIRD
 PARTIES WITHOUT PRIOR
 WRITTEN PERMISSION FROM
 BELLINGHAM MARINE
 INDUSTRIES, INC. UNIFLOAT®
 UNIDECK® AND © BELLINGHAM
 MARINE INDUSTRIES, INC.

PROJECT NUMBER:
7109
 ENGINEER / DESIGNER:
 PROJECT MANAGER:
 CHECKED BY:

DANA POINT HARBOR REVITALIZATION
 ALL MARINA AREAS (EAST, WEST, OUTER BASINS)
 Dana Point, CA

BOATER PARKING PLAN- COVE EAST
 EXISTING CONDITIONS

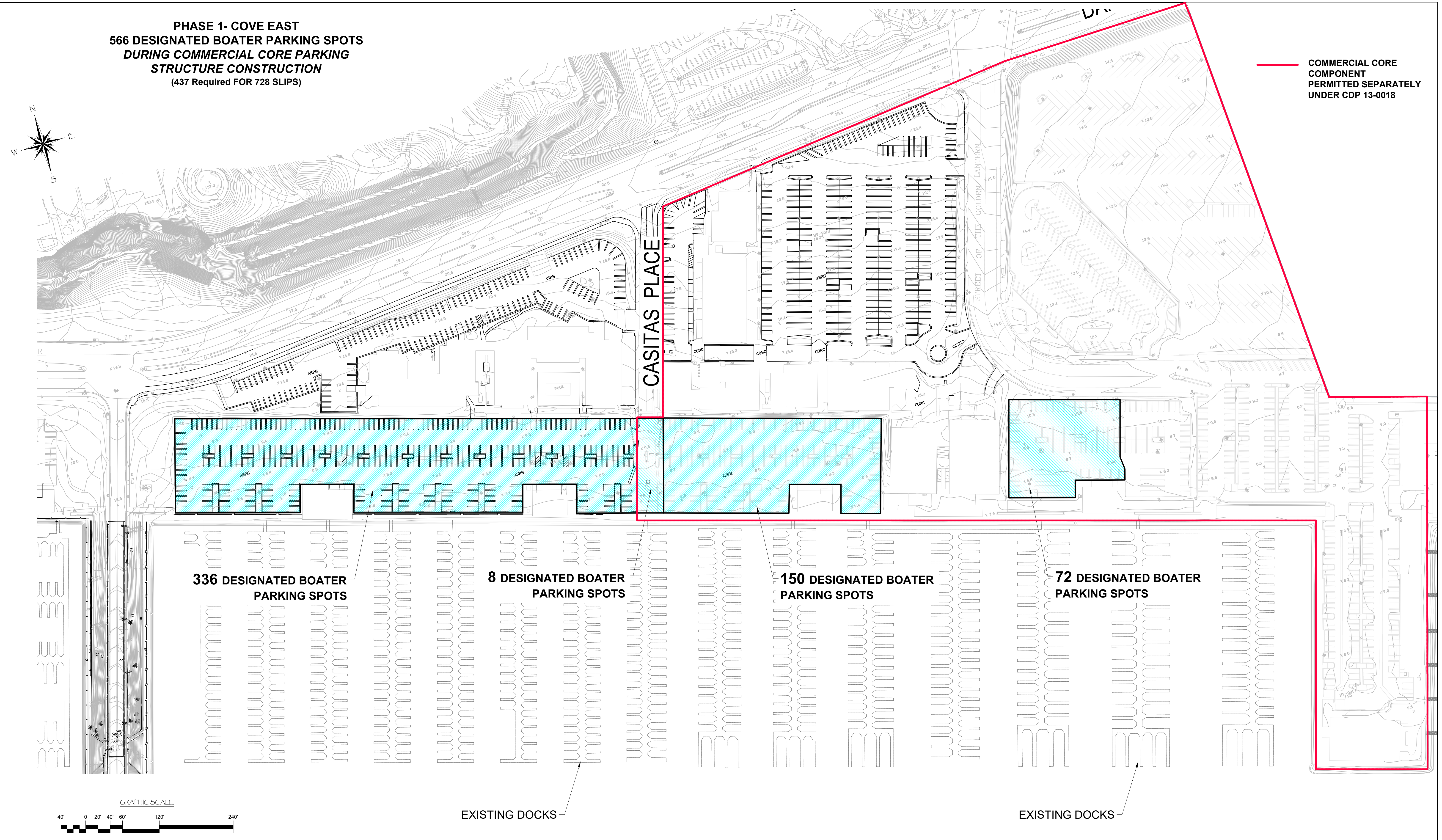
BP-p1

SCALE: 1" = 70'
 (Sheet Size 24" x 36")
 DRAWN BY: DD
 DATE: 8-5-19
 DRAWING: BP-p1
 SHEET NO.:

PHASE 1- COVE EAST
566 DESIGNATED BOATER PARKING SPOTS
DURING COMMERCIAL CORE PARKING
STRUCTURE CONSTRUCTION
 (437 Required FOR 728 SLIPS)

— COMMERCIAL CORE
 COMPONENT
 PERMITTED SEPARATELY
 UNDER CDP 13-0018

PRELIMINARY - NOT FOR CONSTRUCTION



NO.	DATE	DESCRIPTION	BY
		REVISIONS	

Bellingham
MARINE
 THE WORLD'S MOST
 COMPREHENSIVE
 MARINA BUILDER

SOUTHWEST DIVISION
 CA LICENSE #442499
 8810 SPARLING LANE
 DIXON, CA 95620
 TEL: (707) 678-2385
 FAX: (707) 678-1760

THIS DRAWING CONTAINS
 PROPRIETARY INFORMATION
 WHICH IS THE PROPERTY OF
 BELLINGHAM MARINE
 INDUSTRIES, INC. AND SHALL
 NOT BE COPIED, REPRODUCED
 OR MADE AVAILABLE TO THIRD
 PARTIES WITHOUT PRIOR
 WRITTEN PERMISSION FROM
 BELLINGHAM MARINE
 INDUSTRIES, INC. UNIFLOAT®
 UNIDECK® AND © BELLINGHAM
 MARINE INDUSTRIES, INC.

PROJECT NUMBER:
7109

ENGINEER / DESIGNER:

PROJECT MANAGER:

CHECKED BY:

DANA POINT HARBOR REVITALIZATION
 ALL MARINA AREAS (EAST, WEST, OUTER BASINS)
 Dana Point, CA

BOATER PARKING PLAN- COVE EAST
PHASE 1

BP-p2

SCALE: 1" = 140'
 (Sheet Size 24" x 36")

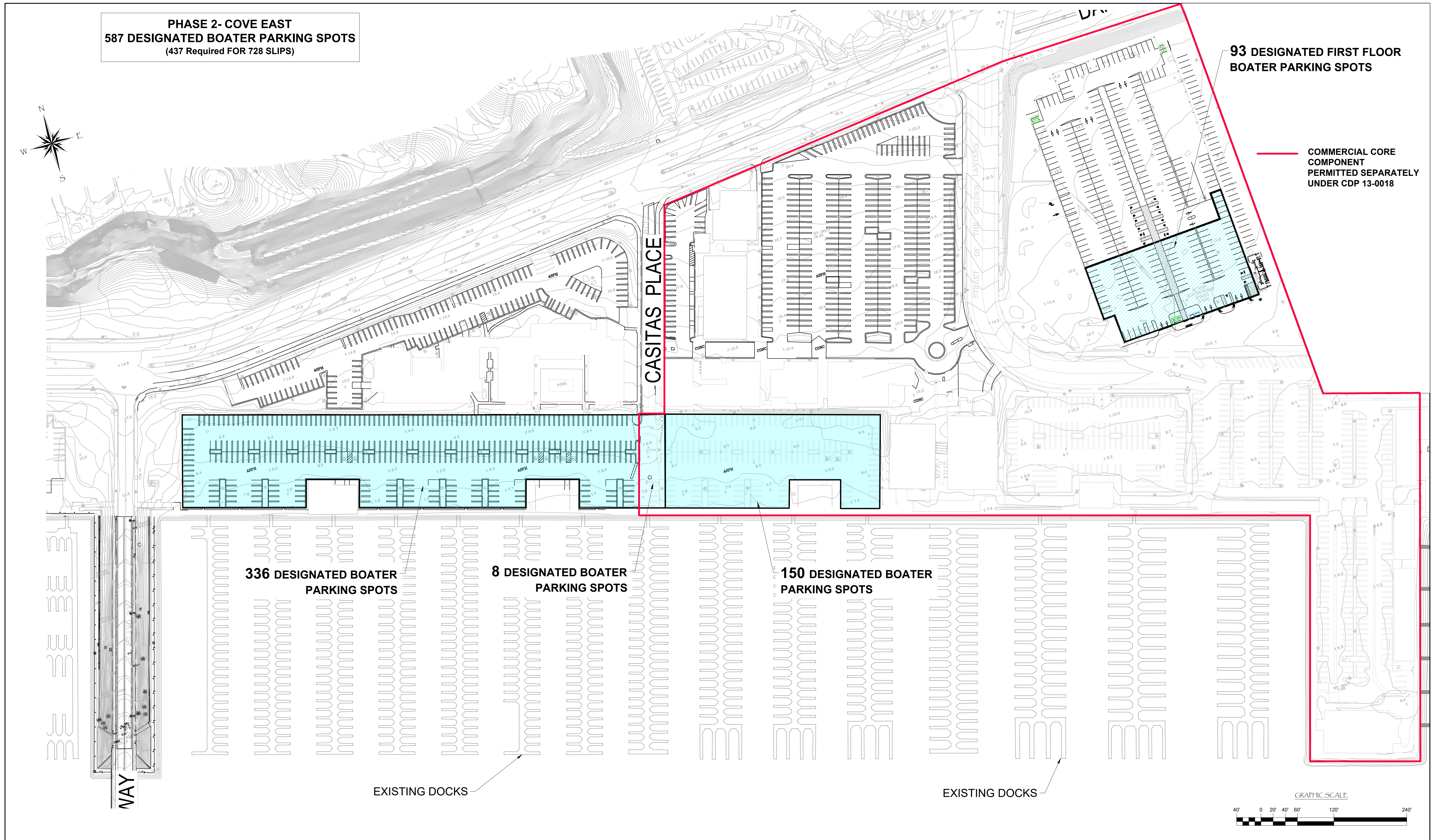
DRAWN BY: DD

DATE: 8-5-19

DRAWING: BP-p2

SHEET NO.:

PRELIMINARY - NOT FOR CONSTRUCTION



NO.	DATE	DESCRIPTION	BY
REVISIONS			

Bellingham MARINE
 THE WORLD'S MOST COMPREHENSIVE MARINA BUILDER

SOUTHWEST DIVISION
 CA LICENSE #442499
 8810 SPARLING LANE
 DIXON, CA 95620
 TEL: (707) 678-2385
 FAX: (707) 678-1760

THIS DRAWING CONTAINS PROPRIETARY INFORMATION WHICH IS THE PROPERTY OF BELLINGHAM MARINE INDUSTRIES, INC. AND SHALL NOT BE COPIED, REPRODUCED OR MADE AVAILABLE TO THIRD PARTIES WITHOUT PRIOR WRITTEN PERMISSION FROM BELLINGHAM MARINE INDUSTRIES, INC. UNIFLOAT® UNIDECK® AND © BELLINGHAM MARINE INDUSTRIES, INC.

PROJECT NUMBER:
7109

ENGINEER / DESIGNER:

PROJECT MANAGER:

CHECKED BY:

DANA POINT HARBOR REVITALIZATION
 ALL MARINA AREAS (EAST, WEST, OUTER BASINS)
 Dana Point, CA

BOATER PARKING PLAN- COVE EAST
 PHASE 2

BP-p3

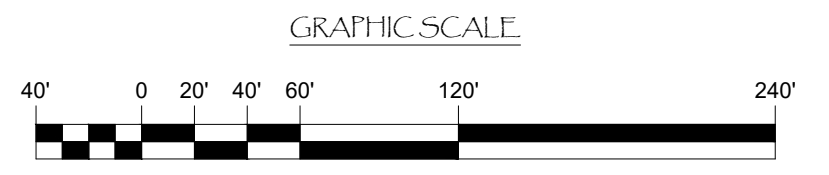
SCALE: 1" = 140'
 (Sheet Size 24" x 36")

DRAWN BY: DD

DATE: 8-5-19

DRAWING: BP-p3

SHEET NO.:

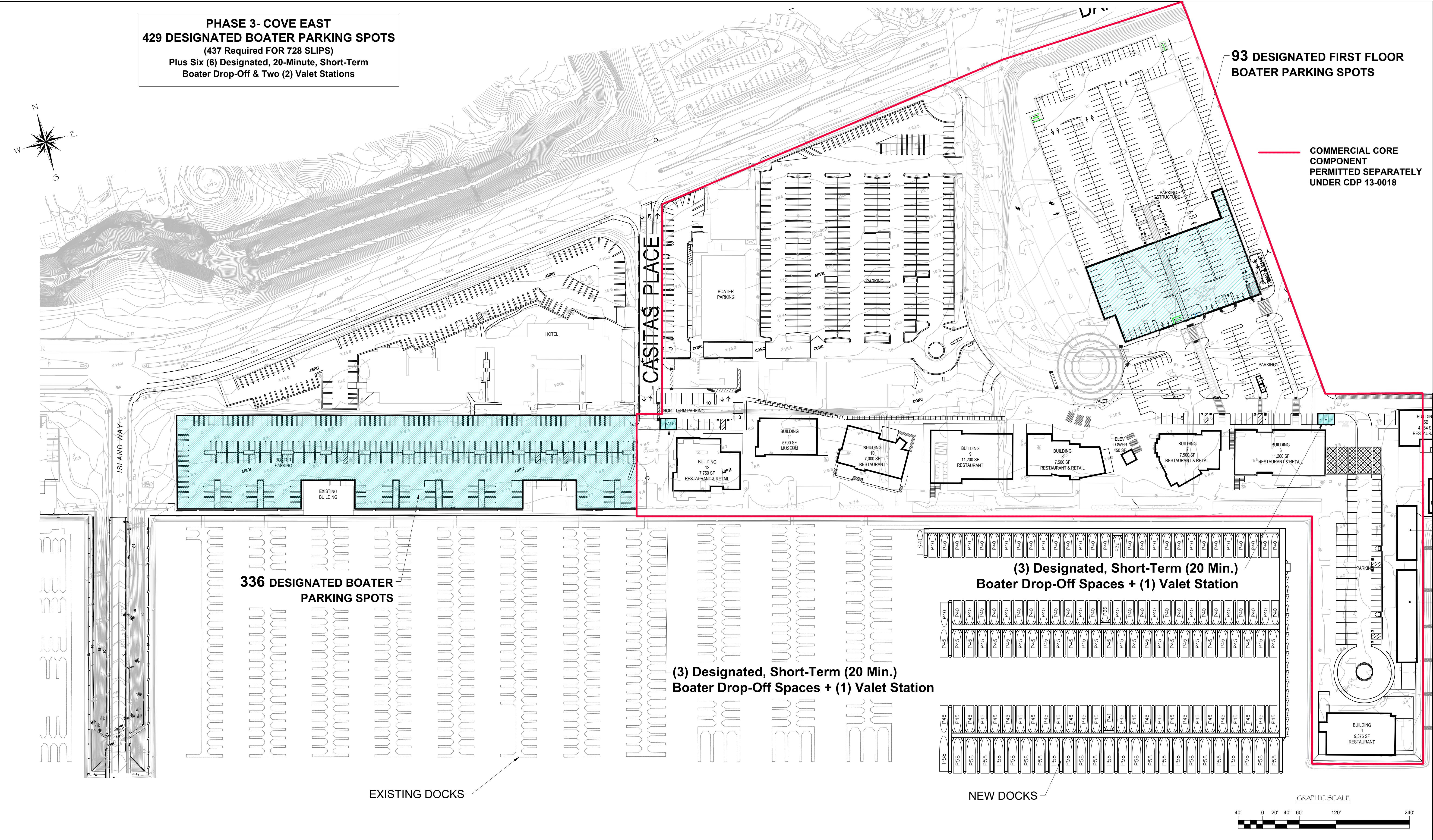


PRELIMINARY - NOT FOR CONSTRUCTION

PHASE 3- COVE EAST
429 DESIGNATED BOATER PARKING SPOTS
 (437 Required FOR 728 SLIPS)
 Plus Six (6) Designated, 20-Minute, Short-Term
 Boater Drop-Off & Two (2) Valet Stations

**93 DESIGNATED FIRST FLOOR
 BOATER PARKING SPOTS**

**COMMERCIAL CORE
 COMPONENT
 PERMITTED SEPARATELY
 UNDER CDP 13-0018**



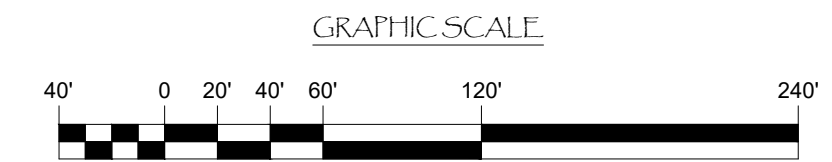
**336 DESIGNATED BOATER
 PARKING SPOTS**

**(3) Designated, Short-Term (20 Min.)
 Boater Drop-Off Spaces + (1) Valet Station**

**(3) Designated, Short-Term (20 Min.)
 Boater Drop-Off Spaces + (1) Valet Station**

EXISTING DOCKS

NEW DOCKS



NO.	DATE	DESCRIPTION	BY
REVISIONS			

Bellingham MARINE
 THE WORLD'S MOST COMPREHENSIVE MARINA BUILDER

SOUTHWEST DIVISION
 CA LICENSE #442499
 8810 SPARLING LANE
 DIXON, CA 95620
 TEL: (707) 678-2385
 FAX: (707) 678-1760

THIS DRAWING CONTAINS PROPRIETARY INFORMATION WHICH IS THE PROPERTY OF BELLINGHAM MARINE INDUSTRIES, INC. AND SHALL NOT BE COPIED, REPRODUCED OR MADE AVAILABLE TO THIRD PARTIES WITHOUT PRIOR WRITTEN PERMISSION FROM BELLINGHAM MARINE INDUSTRIES, INC. UNIFLOAT® UNIDECK® AND © BELLINGHAM MARINE INDUSTRIES, INC.

PROJECT NUMBER:
7109

ENGINEER / DESIGNER:

PROJECT MANAGER:

CHECKED BY:

DANA POINT HARBOR REVITALIZATION
 ALL MARINA AREAS (EAST, WEST, OUTER BASINS)
 Dana Point, CA

**BOATER PARKING PLAN- COVE EAST
 PHASE 3**

SCALE: 1" = 140'
 (Sheet Size 24" x 36")

DRAWN BY: DD

DATE: 8-5-19

DRAWING: BP-p4

SHEET NO.:

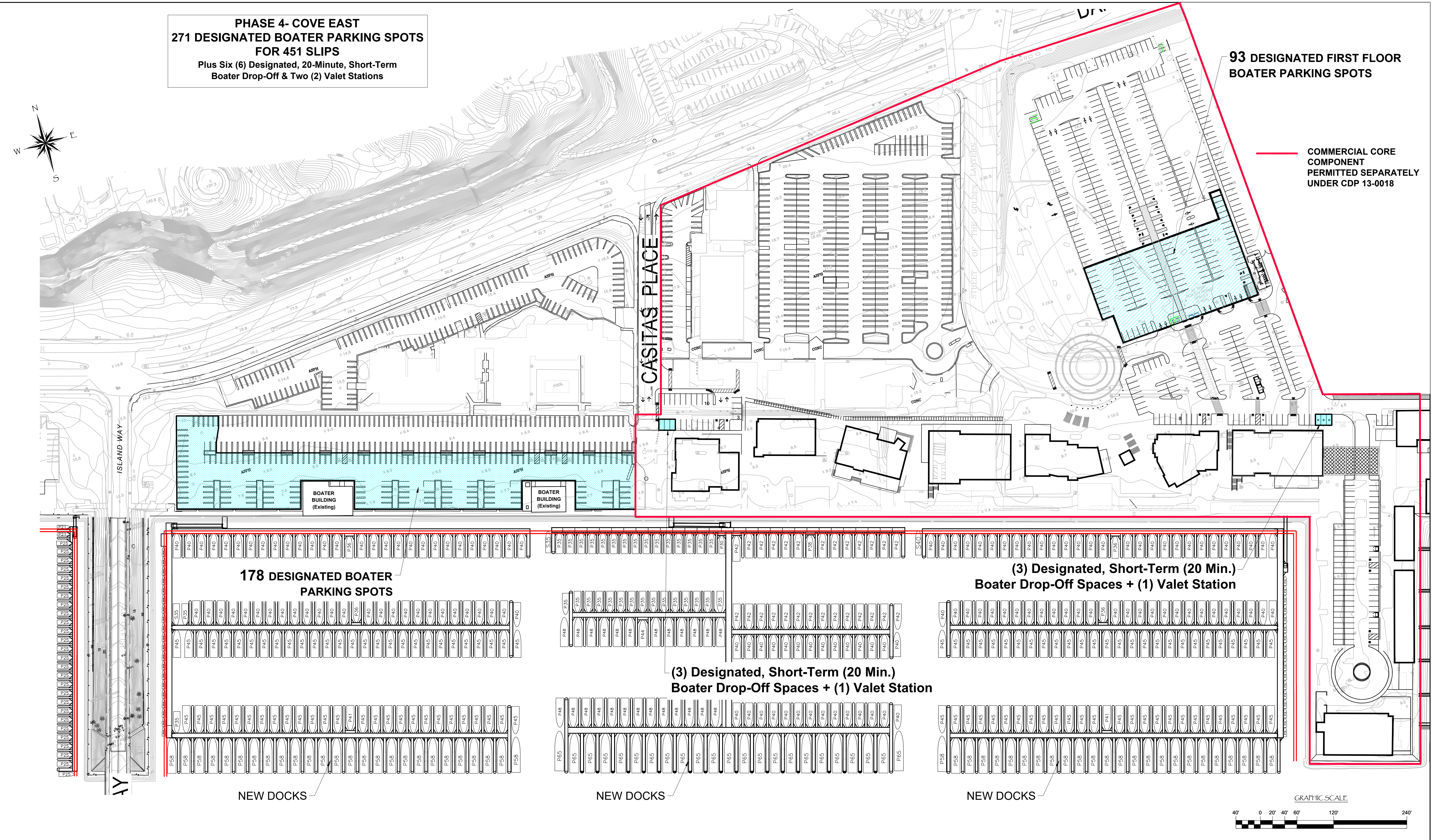
BP-p4

PRELIMINARY - NOT FOR CONSTRUCTION

PHASE 4- COVE EAST
271 DESIGNATED BOATER PARKING SPOTS
FOR 451 SLIPS
 Plus Six (6) Designated, 20-Minute, Short-Term
 Boater Drop-Off & Two (2) Valet Stations

**93 DESIGNATED FIRST FLOOR
 BOATER PARKING SPOTS**

**COMMERCIAL CORE
 COMPONENT
 PERMITTED SEPARATELY
 UNDER CDP 13-0018**



**178 DESIGNATED BOATER
 PARKING SPOTS**

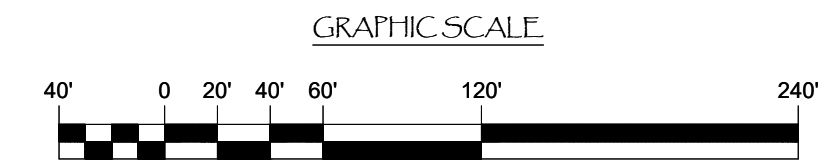
**(3) Designated, Short-Term (20 Min.)
 Boater Drop-Off Spaces + (1) Valet Station**

**(3) Designated, Short-Term (20 Min.)
 Boater Drop-Off Spaces + (1) Valet Station**

NEW DOCKS

NEW DOCKS

NEW DOCKS



NO.	DATE	DESCRIPTION	BY
REVISIONS			

Bellingham
MARINE
 THE WORLD'S MOST
 COMPREHENSIVE
 MARINA BUILDER

SOUTHWEST DIVISION
 CA LICENSE #442499
 8810 SPARLING LANE
 DIXON, CA 95620
 TEL: (707) 678-2385
 FAX: (707) 678-1760

THIS DRAWING CONTAINS
 PROPRIETARY INFORMATION
 WHICH IS THE PROPERTY OF
 BELLINGHAM MARINE
 INDUSTRIES, INC. AND SHALL
 NOT BE COPIED, REPRODUCED
 OR MADE AVAILABLE TO THIRD
 PARTIES WITHOUT PRIOR
 WRITTEN PERMISSION FROM
 BELLINGHAM MARINE
 INDUSTRIES, INC. UNIFLOAT®
 UNIDECK® AND © BELLINGHAM
 MARINE INDUSTRIES, INC.

PROJECT NUMBER:
7109
 ENGINEER / DESIGNER:
 PROJECT MANAGER:
 CHECKED BY:

DANA POINT HARBOR REVITALIZATION
 ALL MARINA AREAS (EAST, WEST, OUTER BASINS)
 Dana Point, CA
BOATER PARKING PLAN- COVE EAST
 PHASE 4

SCALE: 1" = 140'
 (Sheet Size 24" x 36")
 DRAWN BY: DD
 DATE: 8-5-19
BP-p5
 DRAWING: BP-p5
 SHEET NO.: